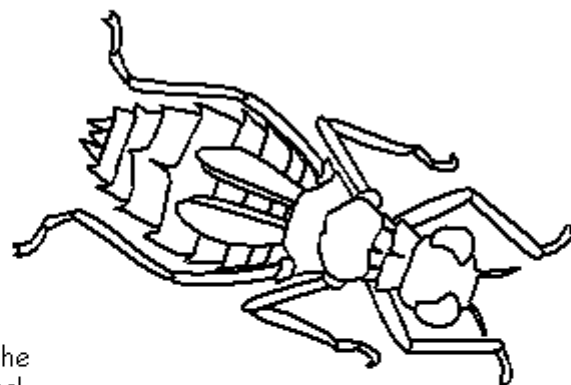
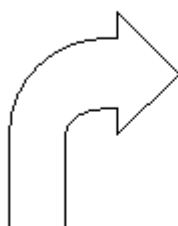


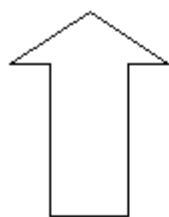
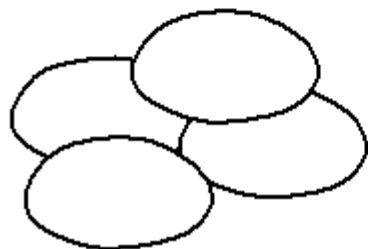
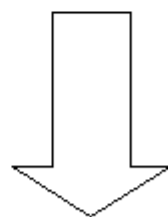
Name: _____



Towards the end of their life cycle, the nymphs climb up out of the water onto plants.

Their skin splits and the adult dragonfly emerges.

The eggs hatch. Most of the life cycle is spent as a larval nymph. Nymphs use internal gills to breathe in the water where they hunt small prey.



Adult dragonflies lay eggs in or near the water.

LIFE CYCLE of a DRAGONFLY

